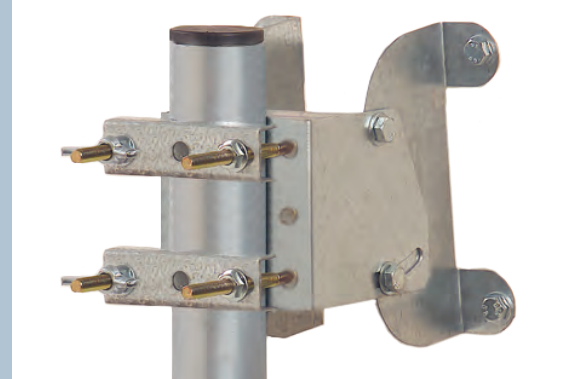




## Satellite set

### KFIB75



#### Technical characteristics

Matériau : reinforced polyester fiber glass

Dish sizes : 71 x 71 cm

F/D ratio : 0,60

Opening angle @ -3dB : 2,9°

Offset angle : 23°

Gain @ 11,8 GHz : 37,6 dB

Frequency range : 10,95 – 12,75 GHz

Efficiency : 70 %

Operational elevation : 15 à 45°

Operational azimuth : 0 à 360°

Mast operational diameter : 30 à 50 mm

Weight : 5,3 Kg

Windload : 160 Km/h

AZ/EL : galvanised steel

Bracon material : aluminium

#### Product advantages ...

- Professional quality
- Composite material
- Anti-corrosion
- UV protected
- Impact resistant
- Temperature variation resistant

#### Set contents ...

- 1 FIB75 dish
- 1 LNB UST100
- 1 Double fluted carton

#### Packaging ...

- 1 set = 1 carton
- 1 pallet = 15 sets



Hot Line **0 899 707 205** Service 0,80 € / min  
+ prix appel

